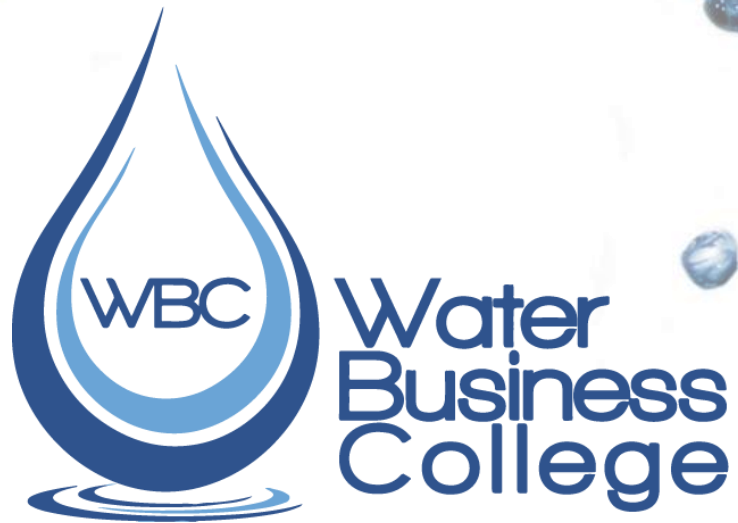


Introduction to Basic Mathematics



Foundation Course

Course Description

This online **Introduction to Basic Mathematics self-assessment course** focusses on exponents; scientific notation; dimensional analyses; rounding and estimation; solving equations and for unknown values; ratios and proportions; calculating averages and percentage; linear, area and volume measurements; graphs, etc.

Purpose of the DIY Exercise

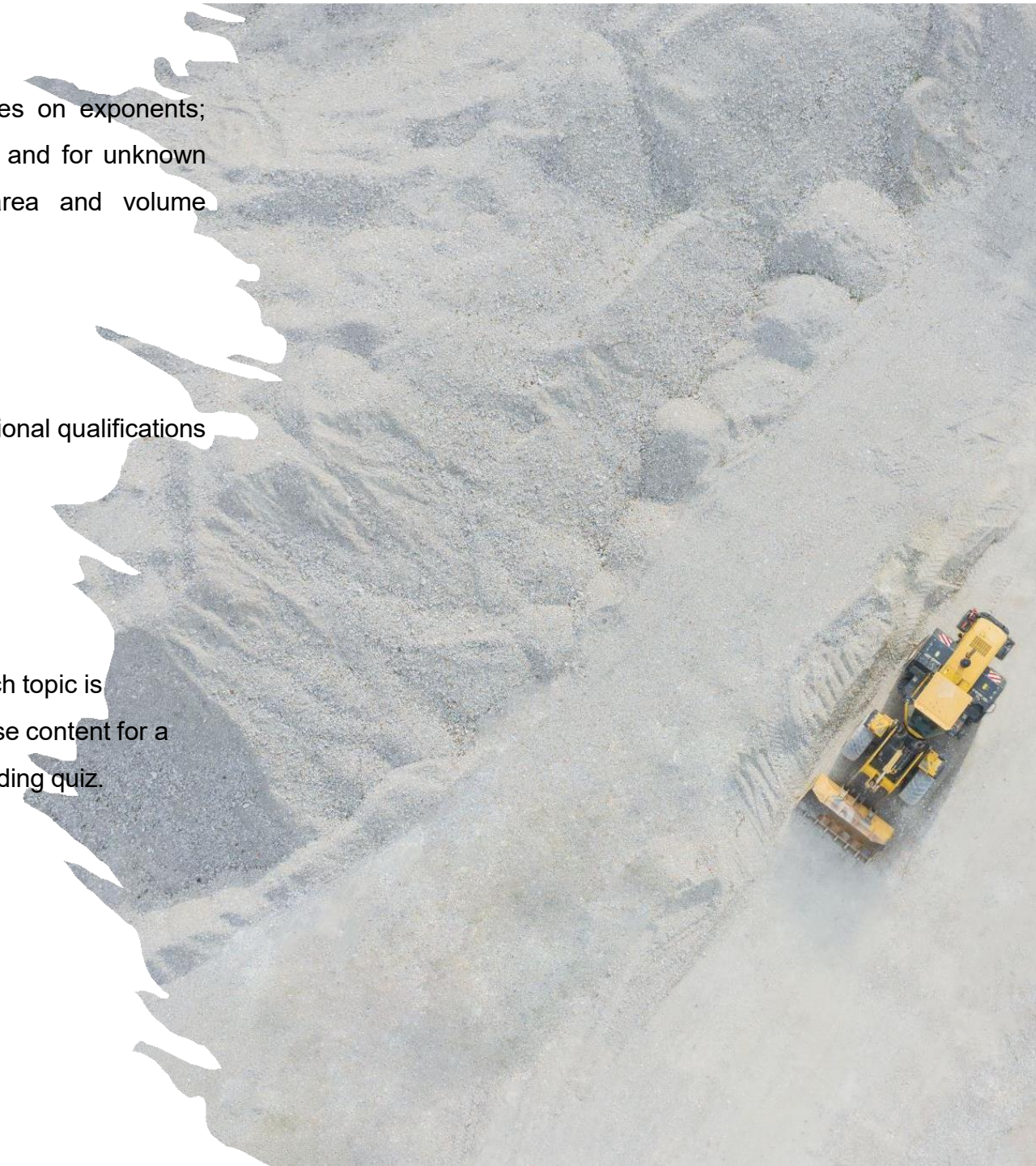
This foundation course is designed for **Technical staff** enrolling for entry-level occupational qualifications as well as for **High School Students** looking to review basic mathematical concepts.

Course structure

The content for the Self-Study / DIY course is sub-divided based on specific topics. Each topic is concluded with a quiz. Learners are expected to achieve 100% for each quiz. The course content for a subsequent topic can only be accessed if the learner achieves a 100% pass for a preceding quiz.

Target Audience for the DIY Training Course

- ❖ **Technical staff** enrolling for entry-level occupational qualifications..
- ❖ **High School Students** looking to review basic mathematical concepts.





Overview

- ❖ **The introductory DIY courses are self-study courses.** The learner / participant completes, at his/her own pace, activities / tasks related to a specific topic. The total time allocated to complete the Self-Study / DIY course is two (2) months.
- ❖ The introductory DIY course is designed to prepare / assist **Technical staff** enrolling for relevant entry-level occupational qualifications and to enable **High School Students** to review basic mathematical concepts.

Engagement with Facilitator

The learner / participant will be able to post questions and/or comments on the activities / tasks. The developer of the DIY course will regularly respond to the questions and comments. The developer may also arrange an online meeting to respond to the questions and/or comments. The date and time for such an online meeting, specific to a DIY course, will be posted on the WBC LMS. All online meetings / forums, etc may / will be recorded and posted on the WBC LMS for the benefit of all learners / participants registered for the DIY course.

Flexibility / Accessibility of Course Material

The DIY courses are available 24/7 and the learner / participant can start at any time once registered!

Topics included in the Self-Study / DIY Course:

This **online Introduction to Basic Mathematics self-assessment course** focusses on exponents; scientific notation; dimensional analyses; rounding and estimation; solving equations and for unknown values; ratios and proportions; calculating averages and percentage; linear, area and volume measurements; graphs, etc.



The background of the slide features a 3D rendering of a puzzle. Most of the puzzle pieces are white, but one piece in the center-right area is a vibrant red color. The pieces are arranged in a way that suggests a larger, partially completed puzzle. The lighting creates soft shadows, giving the pieces a three-dimensional appearance.

Refunds

Cancelling and/or not completing the DIY course does not qualify the learner / participant to be eligible for a refund. Refunds will only be considered if there are compelling reasons (for cancellation / termination) beyond the control of the learner / participant.

In Addition

- ❖ The Foundation Courses are not related to any qualification but may serve to support specific content of a related qualification.
- ❖ The Foundation Courses are not associated with specific NQF levels.
- ❖ This Foundation Courses are **not accredited by the Engineering Council of South Africa (ECSA)** and/ or the **South African Council for Natural Scientific Professions (SACNASP)**.

Course Fees

The **introductory fee** for the online **Mathematics Foundation Course** for employed staff is **R 500**.

Further information on the Foundation Courses can be accessed on the WBC website at: <https://waterbusinesscollege.co.za/>

Registration for the Foundation Courses can be done online at: <https://waterbusinesscollege.co.za/>. Locate the relevant Foundation Course on the WBC website.

Full-Time and Part-Time Scholars (Current Registrations)

The significantly reduced fee for **registered (current registrations) full-time and part-time scholars** at any education institution is **R 100**. Scholars will be required to provide a copy of their annual registration form (current year) issued by the educational institution.

Please submit your documentation to: students@waterbusinesscollege.co.za.





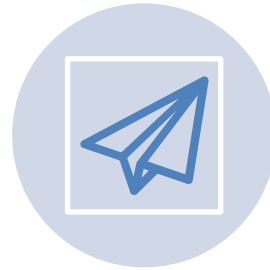
Contact Information



Rian Titus



www.waterbusinesscollege.co.za



contactus@waterbusinesscollege.co.za